



# Facility Explorer CCM09090 Critical Environment Controller



A Facility Explorer controller specifically designed for critical environments

The power behind **your mission**



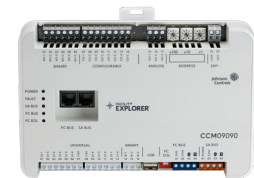
# Facility Explorer Controls for Critical Environments

## Simplify your HVAC infrastructure

The Facility Explorer CCM09090 Critical Environment Controller is a room-level BACnet MS/TP controller designed to provide a rapid response to changing conditions within healthcare spaces and laboratories. Through controlling room parameters like pressure, air changes, temperature and humidity, the CCM09090 works to provide airborne infection control and maintain indoor air quality. The CCM09090 works in conjunction with the CE360 Room Display, which provides a quick view of room parameters and alarms when conditions migrate out of setpoints.

The CCM09090 offers a wide range of configuration options and is programmed using the Controller Configuration Tool (CCT). The controller includes:

- 7 Universal Analog Inputs
- 2 Binary Inputs
- 2 Analog Outputs
- 3 Binary Outputs
- 4 Configurable Outputs
- An expansion module is also available for larger spaces



CCM09090

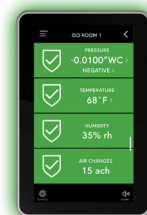
## Faster response rates equal safer critical environments

The PID loop is **3.75** times faster than general room applications and the analog input refresh rate is **10** times faster than general room applications. This rapid response rate enables the controller to more quickly and accurately adjust for pressure changes like doors opening and fume hood sash movement.

## Save time with pre-engineered .caf files

Pre-engineered .caf files saves time on programming and .caf files can be easily cloned and pushed out to all devices, making commissioning large projects faster and easier. Pre-engineered applications include control solutions for:

- Pressure
- Volumetric Offset with Pressure Override Control



CE360

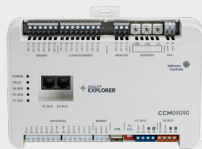
## The CCM09090 enables facilities to meet requirements set by

- ANSI/ASHRAE/ASHE Standard 170 - Ventilation of Healthcare Facilities
- USP 797 - Sterile Pharmaceutical Compounding
- USP 800 - Handling Hazardous Drugs in Healthcare Settings
- ANSI Z9.5 - American National Standard for Laboratory Ventilation

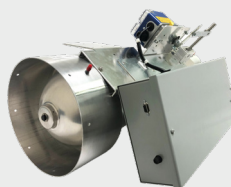


Facility Explorer Dashboard

## Three Mounting Options



Standalone

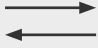


Factory-Mounted on a Venturi Valve

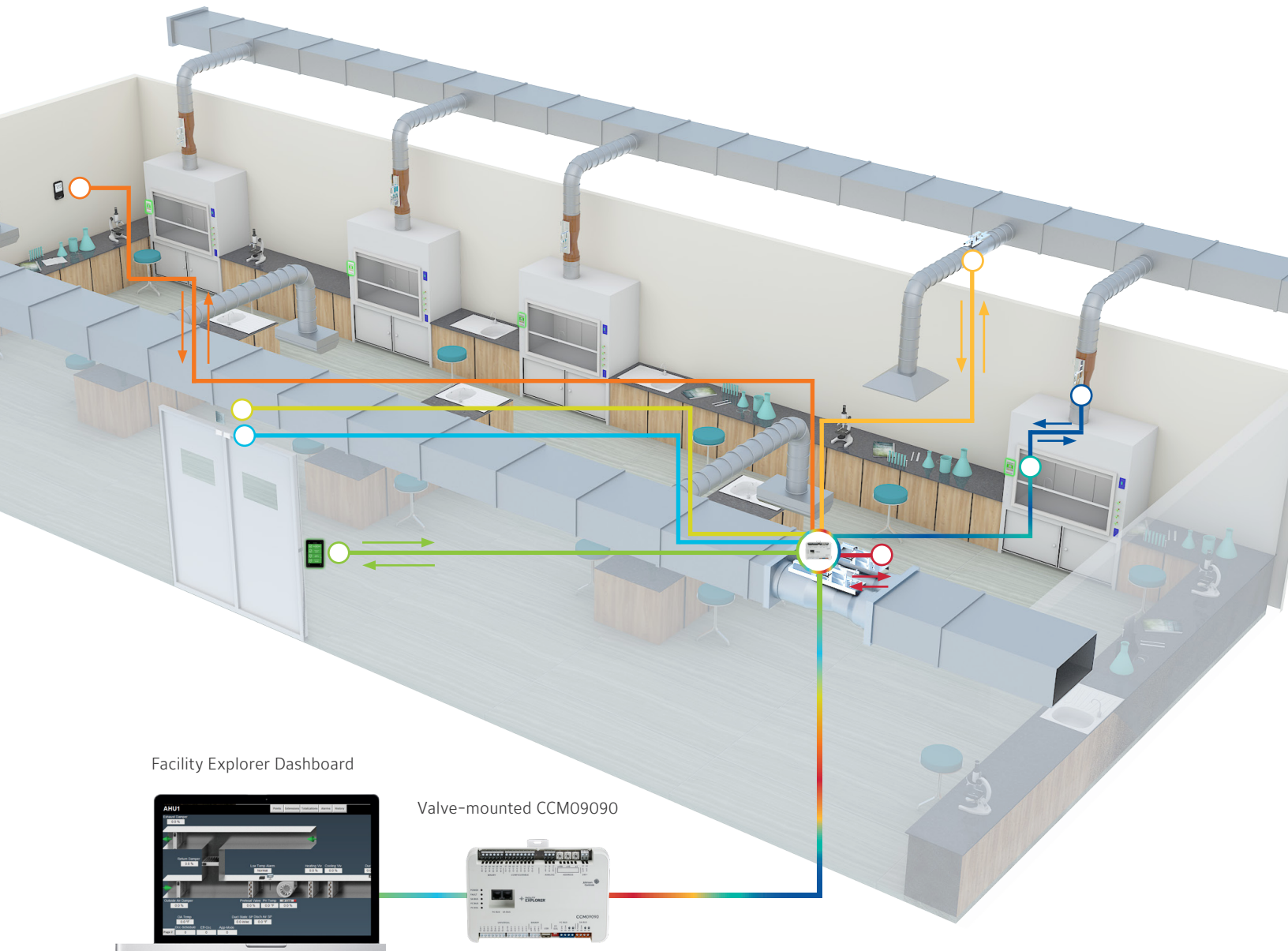


Factory-Mounted within a Wall Panel

# Optimize Your Control System with the Facility Explorer CCM09090 and CE360 Display

- CE360 Room Display
  - Door Switch Sensor
  - Room Differential Pressure Sensor
  - Temperature, Humidity and Occupancy Sensor
  - Room Supply Venturi Valves + CCM09090
  - Room Exhaust Venturi Valve
  - HMS-1655 Fume Hood Controller
  - Fume Hood Exhaust Venturi Valve
- 

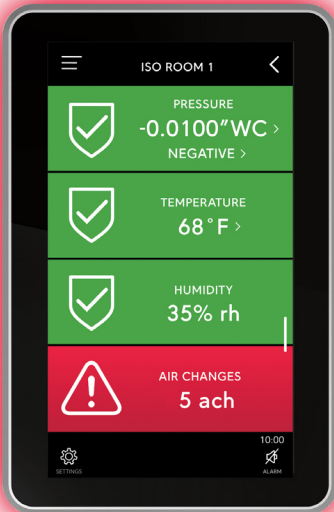
Two way communication



# CE360 Room Level Display

## Continuous Room Status Awareness

The CE360 is a wall-mounted SA Bus display for room parameters controlled by the CCM09090. When set parameters go out of range, the 360° Safety Halo, the screen color and action icon will change to reflect the new state - yellow for warning and red for alarm. Blue represents neutral. Features and benefits include:



- Setpoint adjustments can be made at the CE360 display depending on access level
- High-definition capacitive touch screen display
- Intuitive user interface that mimics a mobile device
- Patented 360° Safety Halo illuminated edge helps staff monitor spaces down long corridors
- Display 10 points or divide points across two rooms from the CCM09090 or other Facility Explorer-controlled parameters through data sharing
- Use the Display Object in CCT to choose which setpoints are to be displayed and program the end user-adjusting capabilities (like temperature)
- One CCM09090 can support up to five CE360 displays
- Displays are ordered à la carte and can be used as the primary or remote display
- The user interface is translated into 17 languages

## Additional Features

- Two access levels
- Up to 50 passwords/PINs
- Works with rubber, nitrile and latex gloves
- Staff can easily snooze the audible alarm by tapping anywhere on the home screen
- Occupancy status in upper left corner
- Arrow in upper right corner guides the user to additional parameters



Quick Access Icons  
Anchored to the Home Screen

## Facility Explorer Familiarity

Whether you are managing a complex lab with multiple fume hoods or a large healthcare system, the CCM09090 combined with the CE360 makes designing, commissioning and trouble shooting critical environment HVAC systems easier for Facility Explorer clients.



# BENEFITS

1

**Ease-of-use:** Configure, commission, and troubleshoot your critical environment controls through the Facility Explorer Controller Configuration Tool (CCT) and MAP Gateway

2

**Save time** with pre-engineered CCT applications for pressure and volumetric offset with pressure override control

3

**Faster response rates:** PID loop processing times are 3.75x faster than general room controls and analog input refresh rates are 10x faster than general room controls

4

**CE360 Room Display Compatibility:** Features a high-definition touch screen, intuitive user interface and Safety Halo™ edge lighting to communicate room status

5

**Time-saving Installation Options:** Factory-mounted on a Venturi valve, within a 16"x20" wall panel, or as a standalone controller

## About Johnson Controls

At Johnson Controls (NYSE:JCI), we transform the environments where people live, work, learn and play. As the global leader in smart, healthy and sustainable buildings, our mission is to reimagine the performance of buildings to serve people, places and the planet.

Building on a proud history of more than 135 years of innovation, we deliver the blueprint of the future for industries such as healthcare, schools, data centers, airports, stadiums, manufacturing and beyond through OpenBlue, our comprehensive digital offering. Today, with a global team of 100,000 experts in more than 150 countries, Johnson Controls offers the world's largest portfolio of building technology and software as well as service solutions from some of the most trusted names in the industry.

To contact the Johnson Controls Critical Environment team email [BE-NA-CESales@jci.com](mailto:BE-NA-CESales@jci.com)

**Visit [www.johnsoncontrols.com](http://www.johnsoncontrols.com) for more information and follow @Johnson Controls on social platforms.**